

washed houses with tile roofs, the view reminded me of St. Cruz in Teneriffe. In a north-easterly direction there are some fine glimpses of the Andes : but these mountains appear much grander when viewed from the neighbouring hills ; the great distance at which they are situated, can

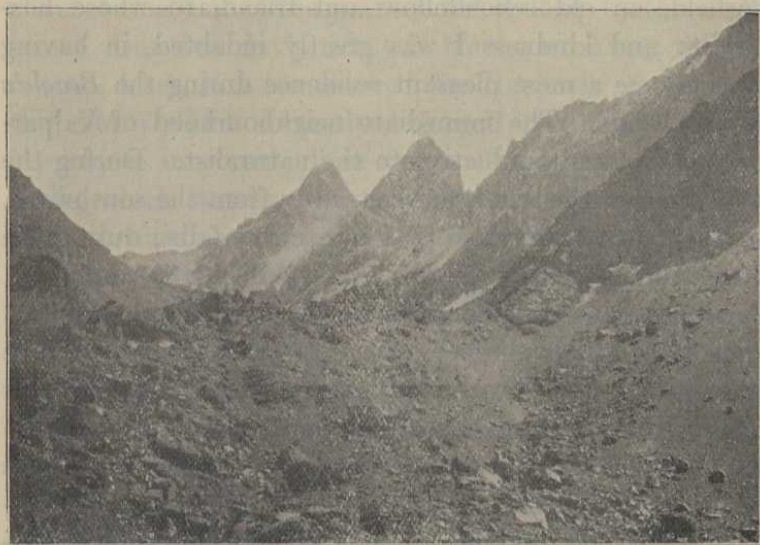


Photo. Underwood & Underwood.

The Summit of Aconcagua from the Chilian side.

then more readily be perceived. The volcano of Aconcagua is particularly magnificent. This huge and irregularly conical mass has an elevation greater than that of Chimborazo ; for, from measurements made by the officers in the *Beagle*, its height is no less than 23,000 feet. The Cordillera, however, viewed from this point, owe the greater part of their beauty to the atmosphere through