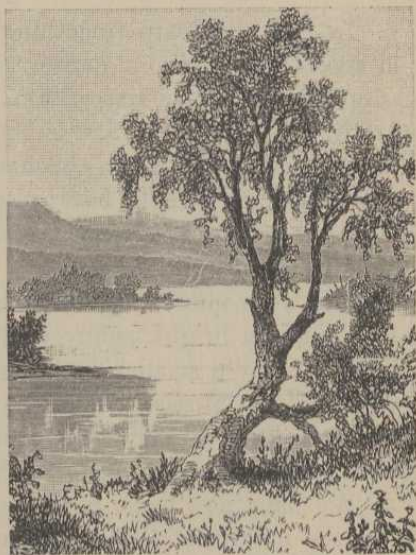


the real source is the tiny pond that is formed by the springs among the pines.

8. Some parts of the *shore* are low, almost even with the water; but in other places hills rise from the edge of the lake. The low shore is covered with bushes, grass, and flowers, and the hills, with tall pine trees. In the middle of the lake, is a small piece of land, also covered with tall trees. That is an *island*. You have perhaps seen islands in little streams in the woods and meadows.



Itasca Lake.

9. If we were to come here in winter, we should find this place looking very different. The pretty lake, and all the streams flowing into it, would be covered with thick ice. The grass and low bushes would be buried out of sight, the flowers dead, and the pine trees wrapped in hoods and mantles of snow. Thus they sleep all through the long winter, until the return of spring awakens them to new life.