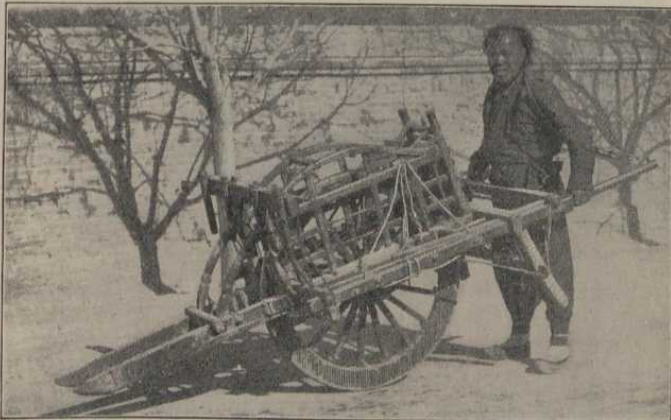


LXVIII.—THE EMPIRES OF CHINA AND JAPAN.

(PART I., PAGES 173-178.)

The *Chinese Empire* is not nearly so large as the Russian Empire, but it contains about three times as many people. The rich plains along the rivers in *China* are the most populous part. The *Japanese Empire* consists of a cluster of islands, somewhat larger than the British Isles. They



A Chinese Wheelbarrow.

lie opposite our country. The people of both empires belong to the yellow race.

The **Chinese Empire** occupies the larger part of middle and eastern Asia. The capital is Peking.

The most famous **productions** are tea, silks, porcelain, and curious carvings in ivory and wood.

Tokyo is the capital of Japan. The **productions** are much like those of China.

The Chinese and Japanese are more advanced in civilization than any other nations of their race.