

to question 15, page 107, are inhabited by negro tribes, who are generally found in a barbarous condition.

6. Small portions only of the islands have been explored, and the majority of them have been but rarely visited by Europeans or Americans.

Questions.—1. When was New Zealand constituted a colony of Great Britain? Its surface, etc? 2. Vegetable productions? 3. Inhabitants? 4. Exports? 5, 6. What is said of the remaining islands of Australasia?

LESSON CLII.

POLYNESIA.

1. The islands of POLYNESIA are scattered irregularly, and generally in groups, over the immense expanse of the Pacific Ocean. Most of them lie south of the equator.

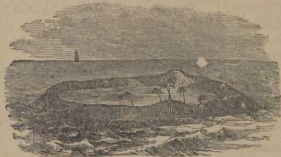
2. They are naturally divided into two classes—the *mountainous* islands, which are mostly of volcanic formation; and the *coral* islands, which are raised but a few feet above the level of the sea.

3. The Sandwich Islands, the Ladrões, the Society Islands, the Marque'sas, and some of the Fee'jee, Friend'ly, Navigator's, and Hervey's islands, are of the former character; the rest belong chiefly to the latter class.

4. The Island of Hawa'ii (or Owhy'hee)—one of the Sandwich Islands—contains an active volcano, named *Kilauea*, the eruptions of which are frequent, and of tremendous power.

There are also two active volcanoes in the group of the Friend'ly Islands.

5. The coral islands are generally of a circular form, consisting mostly of a low belt or reef which incloses a *lagoon* or lake of smooth water. These islands are raised from the deep by the labor of countless myriads of the coral insect.



CORAL ISLAND.

6. The climate of Polynesia is warm; the soil is generally fertile, and the vegetation rich and abundant.

7. Among the principal native plants are the bread-fruit, plantain, pandanus, cocoa-nut, arrow-root, yam, and sweet potato.

8. The natives of these islands are generally regarded as belonging to the Malay family. Through the influence of Christian missionaries many of them have been converted to Christianity.

Questions.—1. What is said of the islands of Polynesia? 2. How divided? 3. Islands belonging to each class? 4. Volcanoes? 5. Describe the coral islands. 6. Climate, soil, and vegetation? 7. Native plants? 8. Inhabitants?